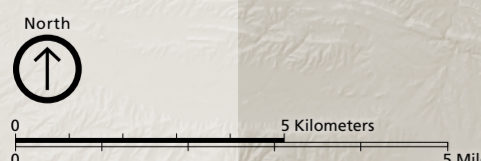


DINOSAUR NATIONAL MONUMENT

Dinosaur fossils can be seen only at the Quarry Exhibit Hall area. No camping allowed on Harpers Corner Road.

Harpers Corner Road closed to cars at Plug Hat Butte during winter.



- Paved road
 - Unpaved road
 - Unpaved road (High-clearance vehicles only)
 - Distance indicator
 - Trail
 - Rapids
 - Ranger station
 - Picnic area
 - Nature trail
 - Star gazing
 - Wheelchair-accessible
 - Campground (water available summer only)
 - Primitive campground
 - River/backcountry campsite (permit required)
- Many unpaved roads are impassable when wet. Check conditions.

Canyon Visitor Center
Open seasonally
Monument Headquarters

Quarry Exhibit Hall
Dinosaur fossils
Quarry Visitor Center
Parking and SHUTTLE PICKUP

RED FLEET STATE PARK (Dinosaur Trackway)
Enter park from Highway 191

To Rangely from Deerlodge Park 17mi 27km

To Maybell 24mi 39km
To Denver 320mi 515km

To Rangely, Grand Junction, and Dinosaur 64 70

To Rangely