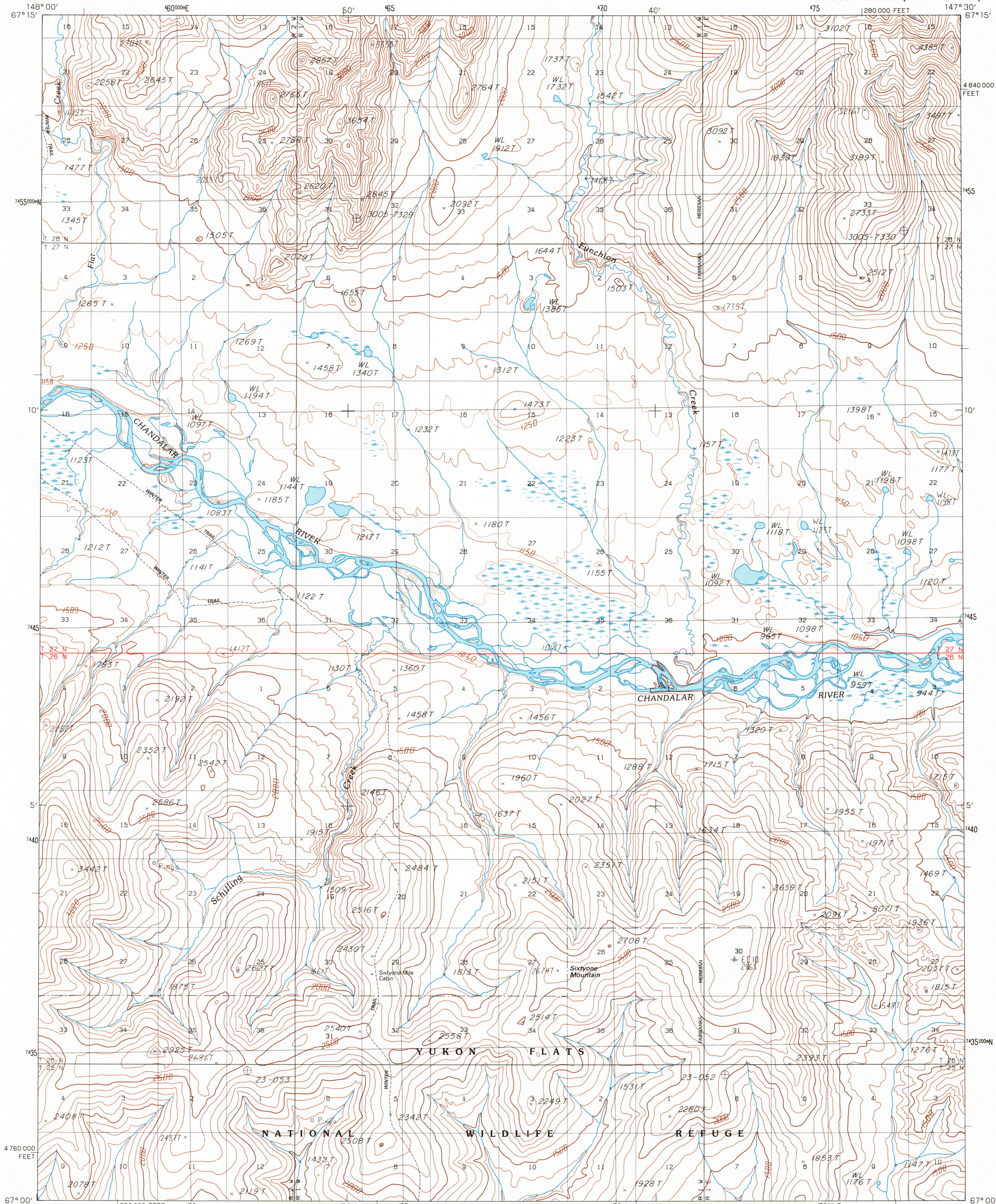


UNITED STATES
DEPARTMENT OF THE INTERIOR
GEOLOGICAL SURVEY

CHANDALAR (A-2) QUADRANGLE
ALASKA
1:63 360 SERIES (TOPOGRAPHIC)



148° 00' 460 000E 50' 465 470 40' 475 280 000 FEET 147° 30' 67° 15'

7455 000N 33 34 35 36 37 38 39 40 41 42 43 44 45 46 47 48 49 50 51 52 53 54 55 56 57 58 59 60 61 62 63 64 65 66 67 68 69 70 71 72 73 74 75 76 77 78 79 80 81 82 83 84 85 86 87 88 89 90 91 92 93 94 95 96 97 98 99 100

10' 11' 12' 13' 14' 15' 16' 17' 18' 19' 20' 21' 22' 23' 24' 25' 26' 27' 28' 29' 30' 31' 32' 33' 34' 35' 36' 37' 38' 39' 40' 41' 42' 43' 44' 45' 46' 47' 48' 49' 50' 51' 52' 53' 54' 55' 56' 57' 58' 59' 60' 61' 62' 63' 64' 65' 66' 67' 68' 69' 70' 71' 72' 73' 74' 75' 76' 77' 78' 79' 80' 81' 82' 83' 84' 85' 86' 87' 88' 89' 90' 91' 92' 93' 94' 95' 96' 97' 98' 99' 100'

745 740 735 730 725 720 715 710 705 700 695 690 685 680 675 670 665 660 655 650 645 640 635 630 625 620 615 610 605 600 595 590 585 580 575 570 565 560 555 550 545 540 535 530 525 520 515 510 505 500 495 490 485 480 475 470 465 460 455 450 445 440 435 430 425 420 415 410 405 400 395 390 385 380 375 370 365 360 355 350 345 340 335 330 325 320 315 310 305 300 295 290 285 280 275 270 265 260 255 250 245 240 235 230 225 220 215 210 205 200 195 190 185 180 175 170 165 160 155 150 145 140 135 130 125 120 115 110 105 100 95 90 85 80 75 70 65 60 55 50 45 40 35 30 25 20 15 10 5 0

4760 000 FEET 67° 00' 220 000 FEET 460 50' 465 470 40' 475 280 000 FEET 147° 30' 67° 00'

148° 00' 460 000E 50' 465 470 40' 475 280 000 FEET 147° 30' 67° 00'

PRODUCED BY THE UNITED STATES GEOLOGICAL SURVEY
CONTROL BY U.S.G.S. NOS/NOAA AND BLM
COMPILED FROM AERIAL PHOTOGRAPHS TAKEN 1978 AND 1981
MAP NOT FIELD CHECKED. MAP EDITED 1990
PROJECTION UNIVERSAL TRANSVERSE MERCATOR
GRID: 5000-METER UNIVERSAL TRANSVERSE MERCATOR
UTM GRID DECLINATION ALASKA, ZONE 6
20 000-FOOT STATE GRID TICKS
UTM GRID DECLINATION ALASKA, ZONE 6
1990 MAGNETIC NORTH DECLINATION 28° 30' EAST
VERTICAL DATUM NATIONAL GEODETIC DATUM OF 1929
HORIZONTAL DATUM 1927 NORTH AMERICAN DATUM
To place on the predicted North American Datum of 1983, move
the projection line 44 meters north and 117 meters east
Gray land lines represent unsurveyed and unmarked locations pre-
determined by the Bureau of Land Management, Folios F-2 and F-3
Fairbanks Meridian
There may be private inholdings within the boundaries of any
Federal or State Reservations shown on this map
Federal Reservation boundaries established by the Alaska National
Indian Lands Conservation Act, PL 96-487, Dec. 2, 1980, are
shown as compiled by the administering agencies
Swamps, as portrayed, indicate only the wetter areas, usually of low
relief, as interpreted from aerial photographs

PROVISIONAL MAP
Produced from original
manuscript drawings. In-
formation shown as of date
of photography

To convert meters to feet multiply by 3.2808
To convert feet to meters multiply by .3048

FOR SALE BY U.S. GEOLOGICAL SURVEY, FAIRBANKS, ALASKA 99701
DENVER, COLORADO 80225, OR RESTON, VIRGINIA 22092

1	2	3	1 Chandalar (B-3)
4	5	2 Chandalar (B-2)	2 Chandalar (B-2)
6	7	3 Chandalar (B-1)	3 Chandalar (B-1)
8	8	4 Chandalar (A-3)	4 Chandalar (A-3)
		5 Chandalar (A-1)	5 Chandalar (A-1)
		6 Beaver (D-3)	6 Beaver (D-3)
		7 Beaver (D-2)	7 Beaver (D-2)
		8 Beaver (D-1)	8 Beaver (D-1)

ADJOINING QUADRANGLE NAMES

CHANDALAR (A-2), ALASKA
PROVISIONAL EDITION 1990
67147-A5-TF-063

ROAD LEGEND
Trail

QUADRANGLE LOCATION

AUG 30 1990