

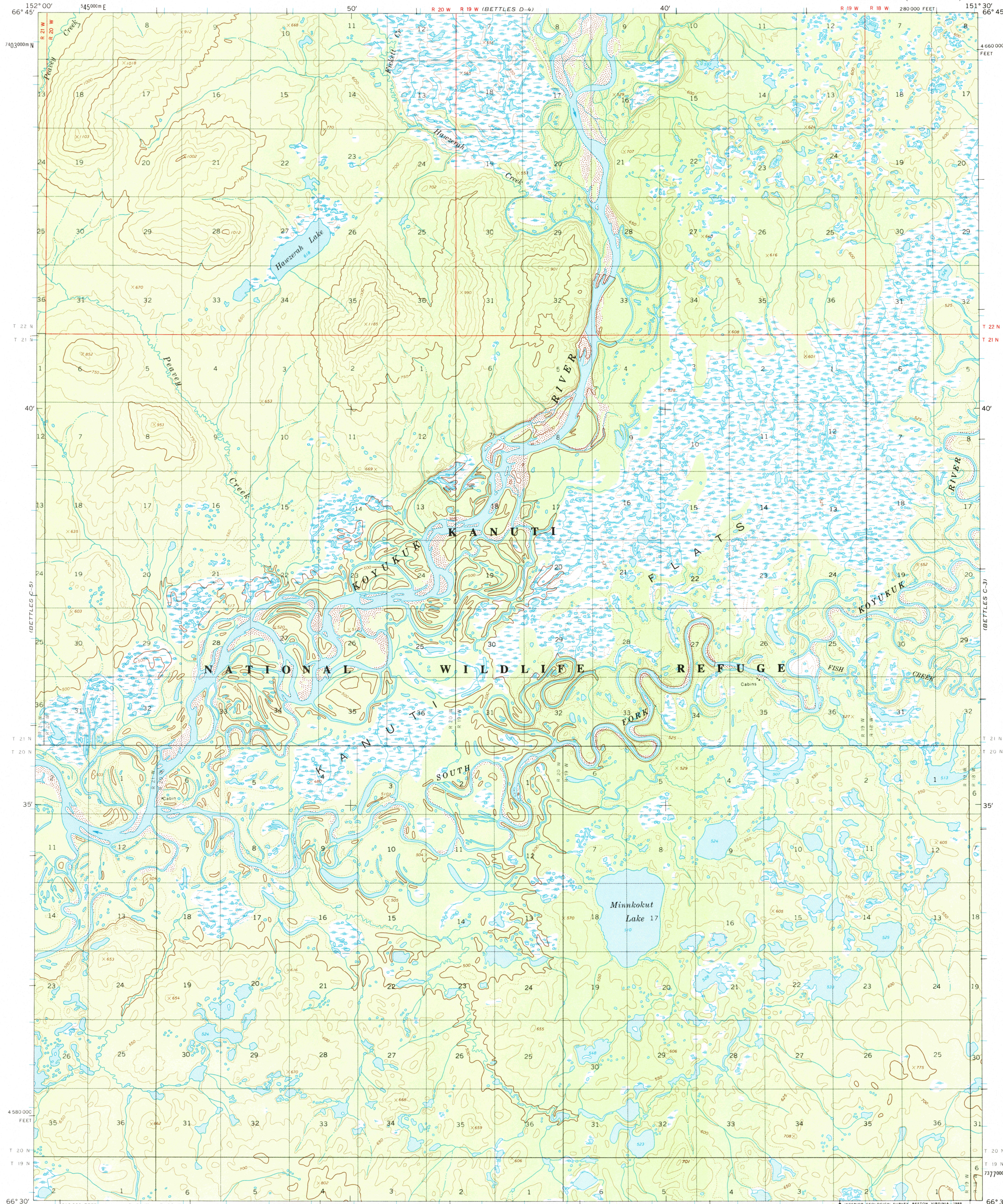
UNITED STATES  
DEPARTMENT OF THE INTERIOR  
GEOLOGICAL SURVEY

BETTLES (C-4) QUADRANGLE

ALASKA

1:63 360 SERIES (TOPOGRAPHIC)

280 000 FEET



Mapped, edited, and published by the Geological Survey

Control by USGS and NOS/NOAA

Topography by photogrammetric methods from aerial photographs taken 1970, field annotated 1970. Map not field checked

Projection and 1000-meter grid ticks shown in blue:

Universal Transverse Mercator, zone 5

10,000-foot grid ticks based on Alaska coordinate

system, zone 4. 1927 North American Datum

To place on the predicted North American Datum 1983 move

the projection lines 56 meters north and 120 meters east

Gray land lines represent unsurveyed and unmarked locations

predetermined by the Bureau of Land Management

Folio F-4, Fairbanks Meridian

Swamps, as portrayed, indicate only the wetter areas,

usually of low relief, as interpreted from aerial photographs

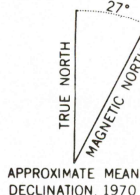
Federal reservation boundaries established by The Alaska National

Interest Lands Conservation Act, PL 96-487, Dec. 2, 1980, are

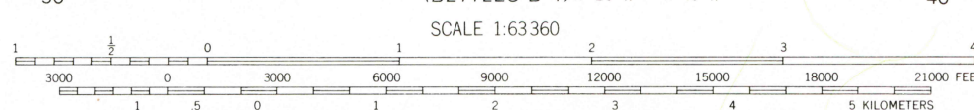
shown as compiled by the administering agencies.

There may be private inholdings within the boundaries of

the National or State reservations shown on this map



APPROXIMATE MEAN  
DECLINATION, 1970



SCALE 1:63 360  
CONTOUR INTERVAL 50 FEET  
DOTTED LINES REPRESENT 25 FOOT CONTOURS  
NATIONAL GEODETIC VERTICAL DATUM OF 1929

FOR SALE BY U. S. GEOLOGICAL SURVEY  
FAIRBANKS, ALASKA 99701, DENVER, COLORADO 80225, OR RESTON, VIRGINIA 22092  
A FOLDER DESCRIBING TOPOGRAPHIC MAPS AND SYMBOLS IS AVAILABLE ON REQUEST



QUADRANGLE LOCATION

ROAD CLASSIFICATION  
No roads or trails in this area

BETTLES (C-4), ALASKA  
66151-E5-TF-063

1970  
MINOR REVISION 1988

USGS NMD HISTORICAL MAP

MAY 13 1988

REC'D FILE COPY